



Top Quality
Creative Design
Amazing Comfort



Keep Worker in Safe!

L-7601

Breathable & Light-weight Safety Shoes

Upper : Durable 3D Weaving Fabric +TPU Print

QuickDial™ Twist Lock System for Fast Tighten & Release

Lining : BactiVoid™ Breathable Sandwich Air Mesh

Insole : Anti-fatigue Memory Foam Insoles

Outsole : QuantumHold™ EVA/Rubber (Hyper-EVA Insert)

Toecap : VortiGard™ Aluminum Toecap

Penetration : QuantumLite™ Anti-puncture PE Fiber

Size : EU 37-47#, UK 3-13#, US4-14#

CE EN ISO 20345:2022+A1:2024 S1 PS FO SR CI FI HRO

ASTM E 2149-2020 Approved Anti-bacteria Lining & Insole (Odor Resistant)

Application : Logistics & Warehouse, Express & Delivery, Repair & Maintenance, Factory Workshop, Garage etc



200 JOULE
TOECAP



SLIP-
RESISTANT



SHOCK
ABSORPTION



ELECTRIC
HAZARD 18KV



ANTI-NAIL
MIDSOLE



PETROL AND
CHEMICAL
RESISTANT



OIL
RESISTANT



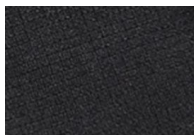
VortiGard™ Aluminum Toe Cap • EN ISO 20345:2022

Aerospace-grade Aluminum toecap delivers 40% weight reduction vs. traditional steel toecap. With uncompromised protection, Aluminum toecap can meet both EN and ASTM standards for impact (200J) and compression (15kN).



QuantumLite™ PE Plate Protection • EN ISO 20345:2022

Engineered with advanced PE fiber, this anti-puncture PE fiber plate is 60% lighter than traditional kevlar plate. It meets rigorous 1100N EN/ASTM safety standards, offering freedom of movement all day long.



Durable 3D Weaving Fabric Upper • EN ISO 20345:2022

High quality weaving nylon fabric is treated with breathable technology to keep feet from dry from long-time standing or walk. The tear strength of fabric can reach to 60 Newtons. TPU printed reinforcement material can extend its lifespan.

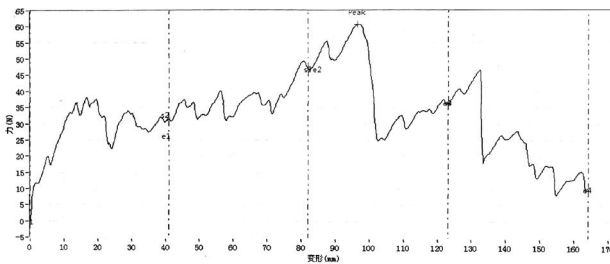


QuantumHold™ EVA/Rubber Outsole • EN ISO 20345:2022

The outsole combines a lightweight, cushioned EVA midsole with a slip, abrasion, and oil-resistant Nitrile Rubber outsole. The heel part features a Hyper-EVA insert for enhanced rebound, supported by a TPU arch structure for ultimate stability and comfort.

Sole Bonding Strength Test

- EN ISO 20345:2022 (Between Upper & Sole)
- Average Test Result 5.8 ± 5 (N/mm)



Upper, Lining & Bonding Strength Test Result

Upper Tear Strength \geq	60.0 Newtons
Upper Tensile Properties \geq	15.0 N/mm ²
Lining Tear Strength \geq	15.0 N/mm
Bonding Strength \geq	4.0 N/mm

✓ Protection With Slip Resistant (SR)	Result
Test Requirement : Forward Heel Slip ≥ 0.31 (ISO 13287:2019) Backward Heel Slip ≥ 0.36 (ISO 13287:2019)	PASS
Standards : EN ISO 20342:2022(5.3.5) , Test floor: Ceramic tile, Lubricant: Sodium lauryl sulphate	
✓ Protection With Anti-Static	Result
Test Requirement : Anti-static 100K Ω -1000M Ω , Test Voltage: 100 \pm 2 V DC, Test Period: 1 Minute	PASS
Standards : EN ISO 20345:2022 Dry Humidity (30 \pm 5) & Wet Humidity (85 \pm 5)	
✓ Protection Resistant to Fuel Oil	Result
Test Requirement : Change in Volume and Change in Hardness (Outsole) is No More Than +12%(*)	PASS
Standards : EN ISO 20345:2022	
SAFETOE Standard Package Instruction (Average 42# for Reference)	
Shoes Weight : 1.0-1.1 KGS /Pair	Carton Weight : 11-12 KGS /Carton
1 Pair / Color Box , Dimensions : 32 \times 21 \times 12CM	10 Pair / Carton , Dimensions : 62 \times 43 \times 33CM



User Instructions:

- 1.) RECOMMENDED TO USE : Logistics & Warehouse, Express & Delivery, Repair & Maintenance, Factory Workshop, Garage etc.
- 2.) LIMITATION TO USE: It is very important that footwear selected must be suitable for the right workplaces. The protection against risks or hazards which are not mentioned in this document is not warranted.
- 3.) FITTING & SIZE: All footwear are marked with standard size on tongue label. Some are with different size comparison, such as EU size, UK size, US size etc. Please wear footwear in a suitable size.

Footwear which are too loose or too tight may not provide optimum level of protection.

4.) STORAGE: Keep the footwear in its original packaging, under ordinary temperature, non-humidity conditions and in clean, covered and ventilated premises.

5.) CLEANING: Clean footwear regularly by high quality cleaning treatments recommended as suitable for the purpose. Don't use caustic or corrosive cleaning agents.